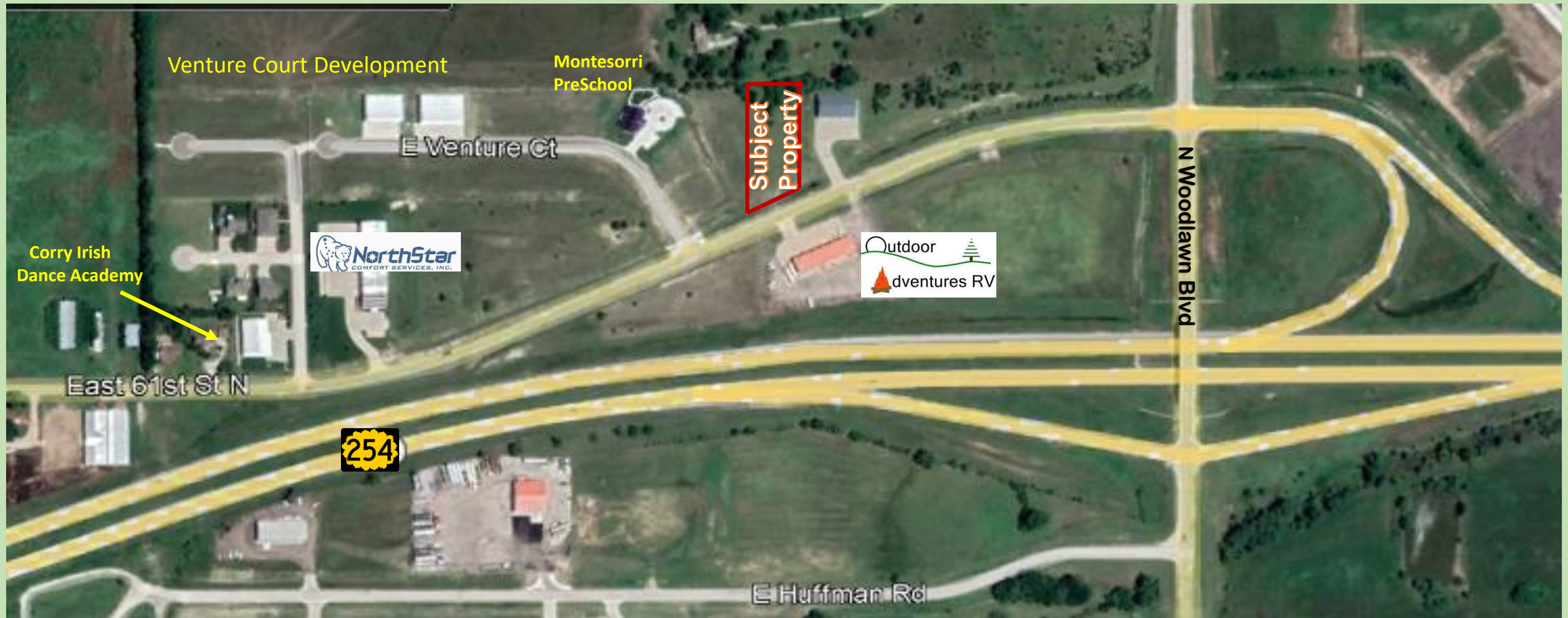


**.56 Acres for Sale or Lease Build to Suit at 61<sup>st</sup> Street North & North Woodlawn in Kechi, KS**



**.56 Acres / 24,394 Sq Ft**

**Zoned C-3**

**Build to Suit as Office – Warehouse Flex Space**

**Easy Access to Wichita KS -10 miles Park City KS - 2 miles Bel Aire KS- 3 miles**

**\$85,000 Sales Price**

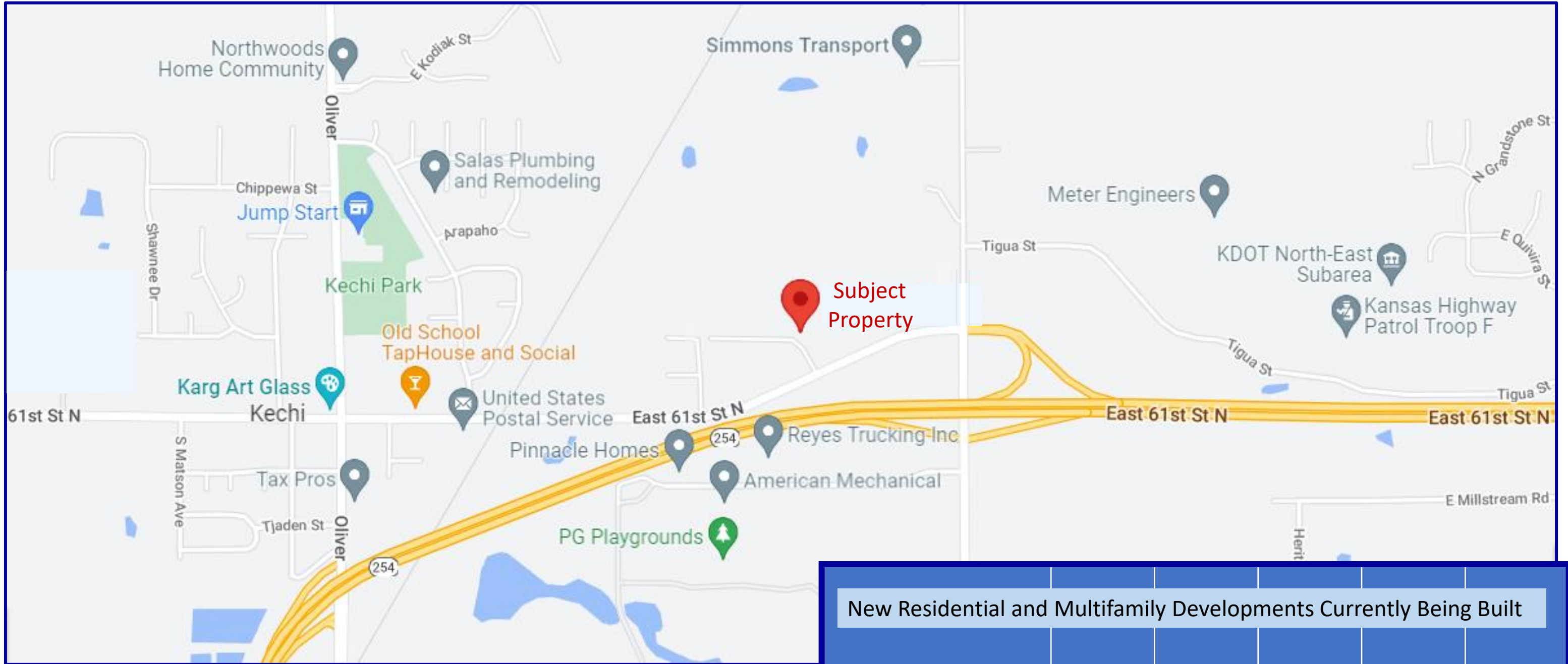
**Terms for Build to Suit to be Negotiated**



**Contact: June Loggins-Hicks (316) 393-5760**

8110 E 32<sup>nd</sup> Str N #150 Wichita KS 67226

# .56 Acres for Sale or Lease Build to Suit at 61<sup>st</sup> Street North & North Woodlawn in Kechi, KS



## New Residential and Multifamily Developments Currently Being Built

East 61st St N & South Oliver Street, Kechi, KS, USA	1 mi	10 mi	15 mi	20 mi
Population	1,419	278,522	472,813	575,521
Median HH Income	\$88,559	\$63,936	\$66,577	\$68,082
Population Median Age	40.6	35.9	35.9	36.1
Households	570	113,022	186,715	225,784



Contact: June Loggins-Hicks (316) 393-5760

8110 E 32<sup>nd</sup> Str N #150 Wichita KS 67226