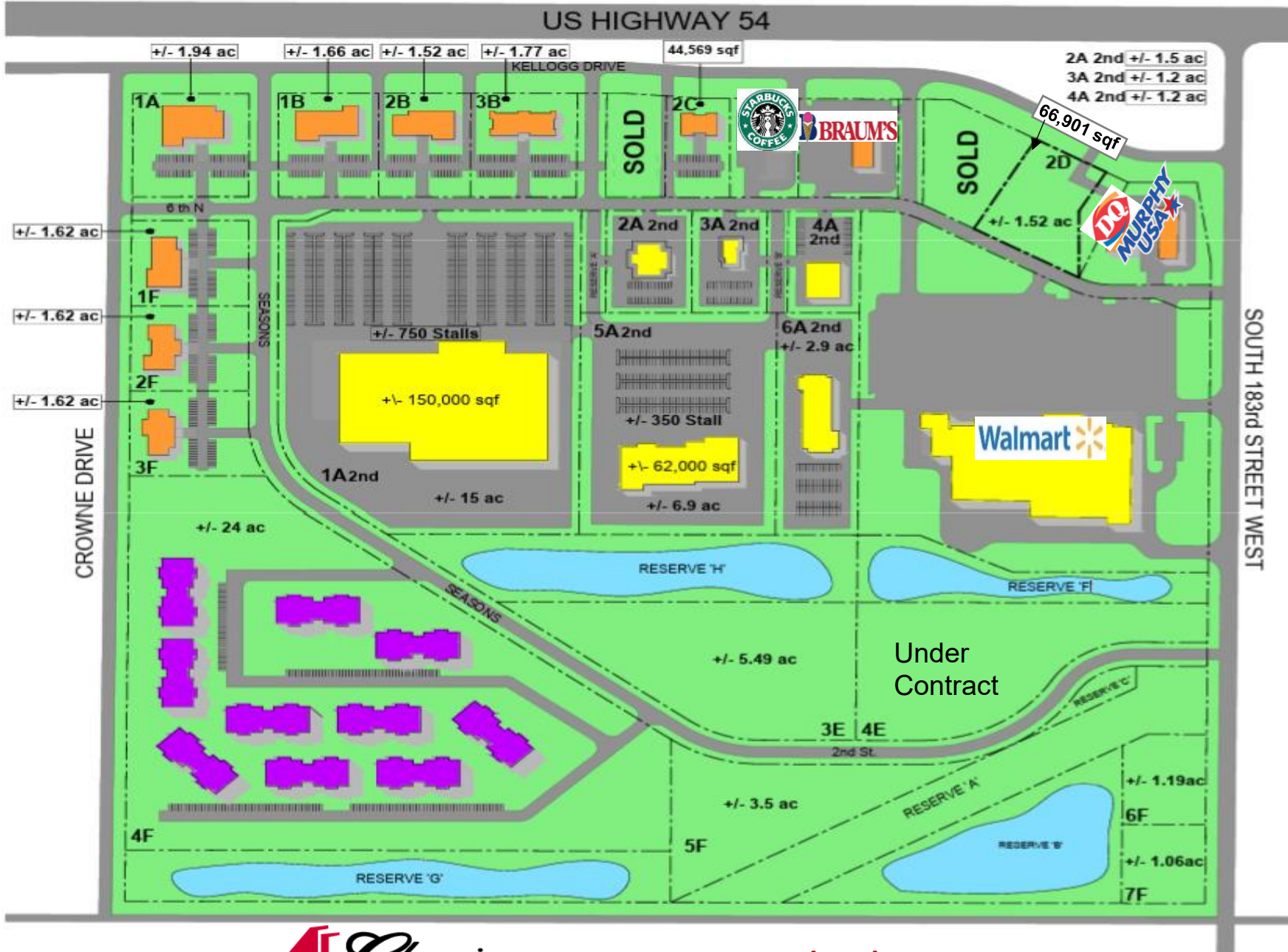


Goddard Galleria - West Kellogg (US Hwy 54) & South 183rd Str West in Goddard, KS

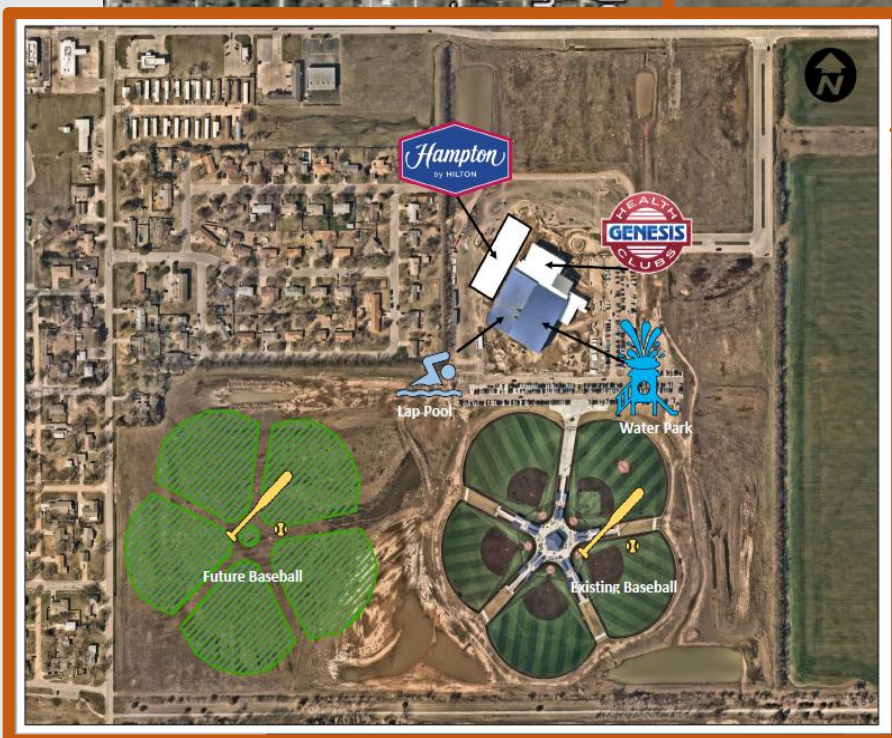
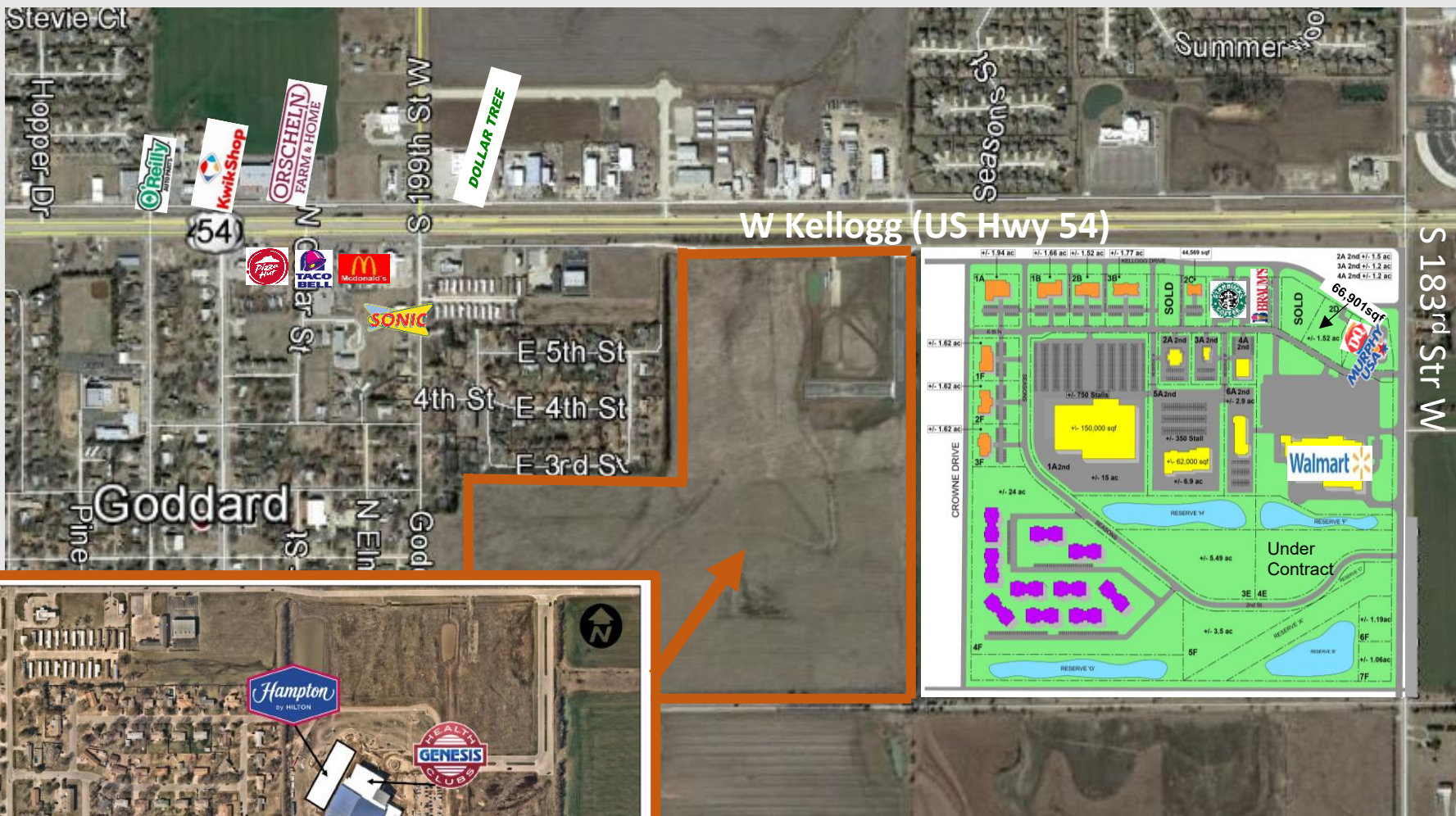


Dwayne M. Dugan (316) 619-3547

8110 E. 32nd Street N, #150 Wichita KS 67226 (316) 634-2600

**183rd Street West & West Kellogg
Goddard Kansas**

**Goddard Galleria
For Lease or Sale**



Great for restaurants, and retail shops
Situated between Star Bond Development
Walmart Utilities Available

Classic real estate inc. **Dwayne M. Dugan (316) 619-3547**

8110 E 32nd Str N #150 Wichita KS 67226 (316) 634-2600

Goddard is a fast growing community with an excellent school district

Five Mile Radius

2024 Estimated population 37,111

2024 Estimated average household income \$107,408

2024 Estimated Households 12,840

