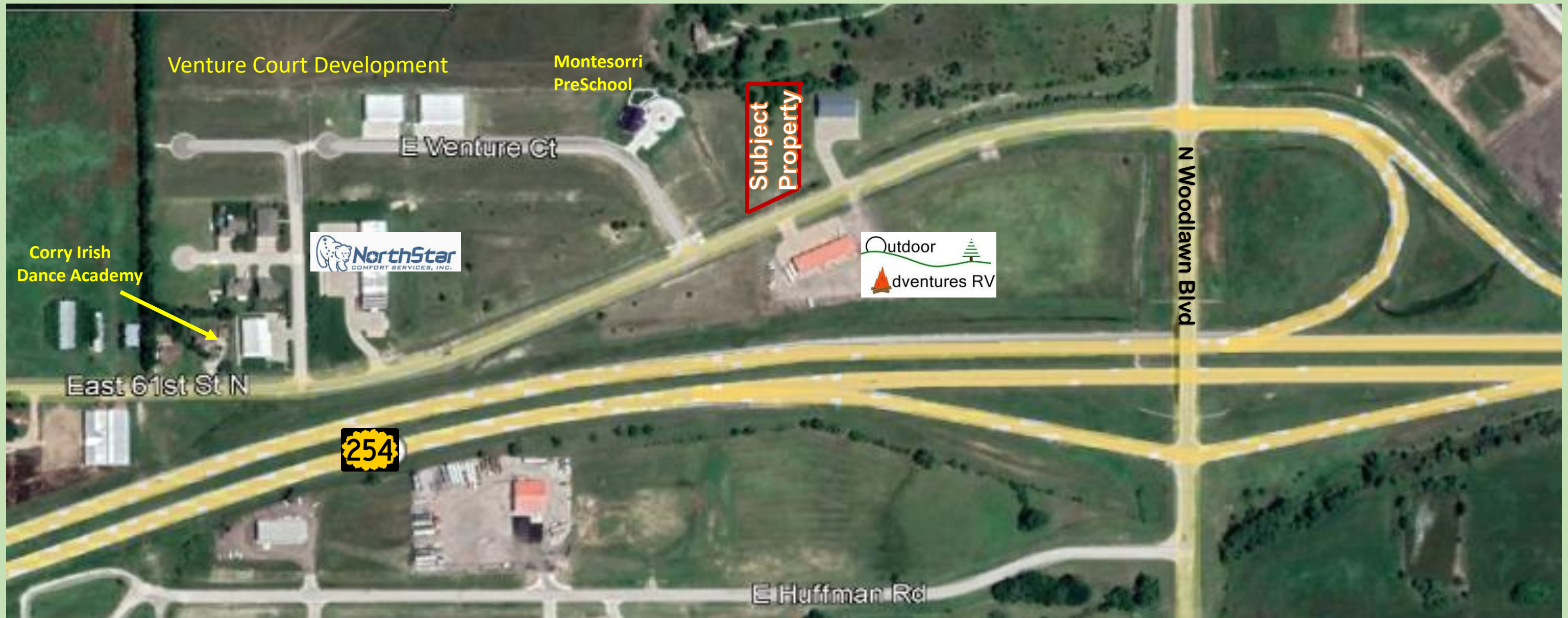


.56 Acres for Sale or Lease Build to Suit at 61st Street North & North Woodlawn in Kechi, KS



.56 Acres / 24,394 Sq Ft

Zoned C-3

Build to Suit as Office – Warehouse Flex Space

Easy Access to Wichita KS, Park City KS, Bel Aire KS

Near the proposed Integra Chip facility

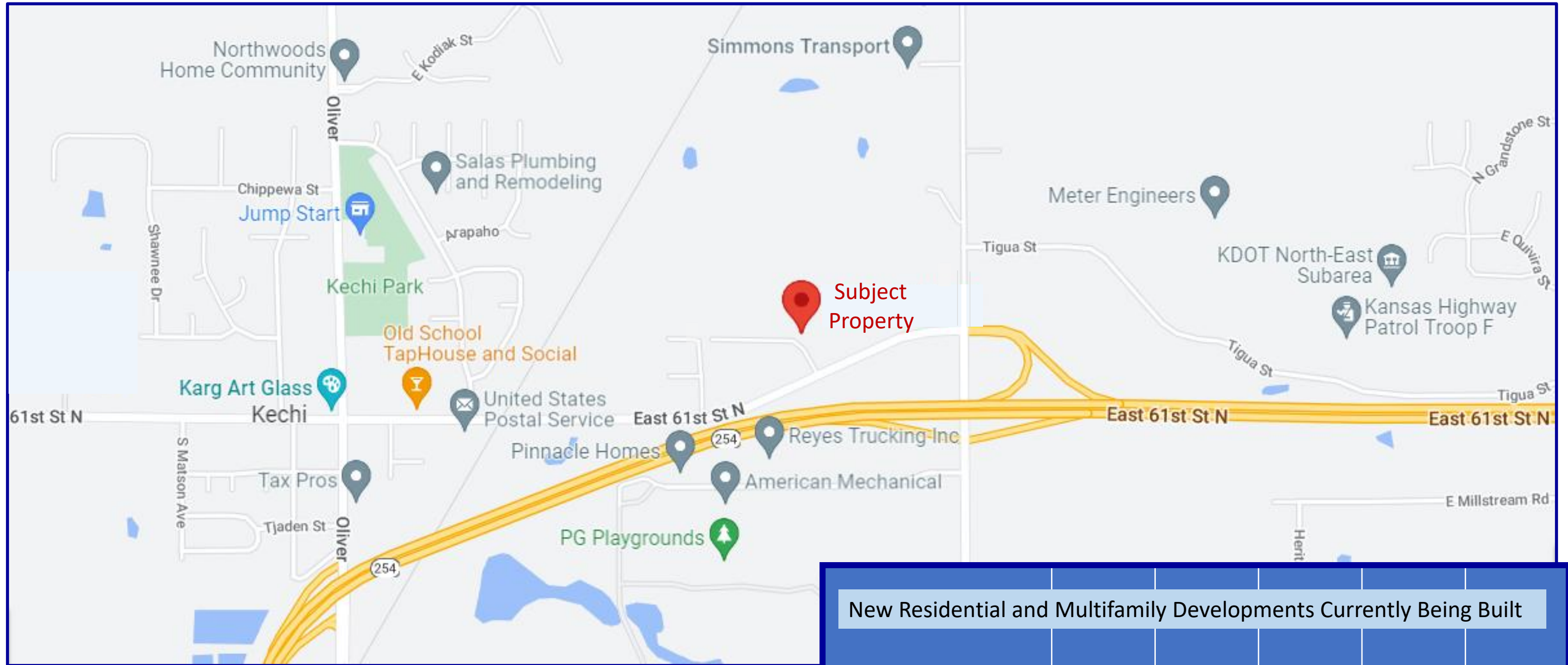
\$90,000 Sales Price and Terms for Lease Build to Suit to be Negotiated



Contact: Craig Ablah (316) 734-1148

8110 E 32nd Str N #150 Wichita KS 67226 (316) 634-2600

.56 Acres for Sale or Lease Build to Suit at 61st Street North & North Woodlawn in Kechi, KS



New Residential and Multifamily Developments Currently Being Built

East 61st St N & South Oliver Street, Kechi, KS, USA	1 mi	10 mi	15 mi	20 mi
Population	1,419	278,522	472,813	575,521
Median HH Income	\$88,559	\$63,936	\$66,577	\$68,082
Population Median Age	40.6	35.9	35.9	36.1
Households	570	113,022	186,715	225,784